

VideoMate M1F
PCI Tuner Card
Start Up Guide

Compro Technology, Inc.
www.comprousa.com

Table of Contents

| | |
|---|----|
| About VideoMate M1F PCI TV Card | 5 |
| VideoMate M1F Package Contents..... | 6 |
| VideoMate M1F Connectors..... | 7 |
| Windows Media Center Remote | 8 |
| Hardware Installation | 10 |
| Software Installation | 11 |
| Remote Power Off | 12 |
| ComproDTV Gadget Tool for Vista/Win 7 | 13 |
| HID (Human Interface Device) for Remote | 16 |
| ComproDTV 4.5..... | 18 |
| ComproFM 2..... | 26 |
| Troubleshooting..... | 27 |

Copyright © 2001-2010. Compro Technology, Inc. No part of this document may be copied or reproduced in any form or by any means without the prior written consent of Compro Technology, Inc.

Compro, VideoMate, Poladyne, Play with Power, and the Compro logo are trademarks of Compro Technology, Inc. Other names and marks are trademarks of their respective owners.

Compro makes no warranties with respect to this documentation and disclaims any implied warranties of merchantability, quality, or fitness for any particular purpose. The information in this document is subject to change without notice. COMPRO reserves the right to make revisions to this publication without obligation to notify any person or entity of any such changes.

Compro Technology, Inc.

Tel. +886 2 2918 0169, Fax +886 2 2915 2389

4/F, No.12, Alley 6, Lane 45, Pao Shin Road

Hsintein City, Taipei, Taiwan.

www.comprousa.com

About VideoMate M1F PCI TV Card

Compro VideoMate M1F is a PCI analog TV/FM capture card, which brings analog TV/FM broadcasts to your desktop PC. It turns your computer into a home entertainment center by bringing you analog TV viewing, FM listening, S-Video/Composite video input. It also certified for Windows 7/ Vista 32/64 bit system.

MINIMUM SYSTEM REQUIREMENTS

Your PC must meet or exceed the following system requirements to watch TV on your PC.

- 1.7 GHz Pentium IV or equivalent CPU for DVD-Quality recording or timeshifting
- 512 MB System Memory
- Available PCI slot
- Sound card or on-board sound chip
- Graphics card or on-board graphics chip support DirectX 9.0
- CD-ROM driver for software installation.
- Windows XP SP3 / Vista SP1 / Windows 7 x86 / x64
- 50 MB free disk space for basic software installation

RECOMMENDED SYSTEM REQUIREMENTS

To use all the features of VideoMate M1F PCI card, your PC should meet the following requirements.

- 2.4 GHz for PIP mode
- 1.0 GB System Memory
- Available PCI slot
- Sound card or on-board sound chip
- Graphics card or on-board graphics chip support DirectX 9.0
- CD-ROM for software installation
- Windows XP SP3 / Vista SP1 / Windows 7 x86 / x64
- Update the latest drivers of VGA, motherboard, and soundcard from vendors.
- 600 MB (VCD-quality) to 3 GB (DVD-quality) per hour of recorded video

VideoMate M1F Package Contents



M1F
PCI TV card



WMC Remote



Batteries



Installation CD



FM Antenna



AUX-Out cable

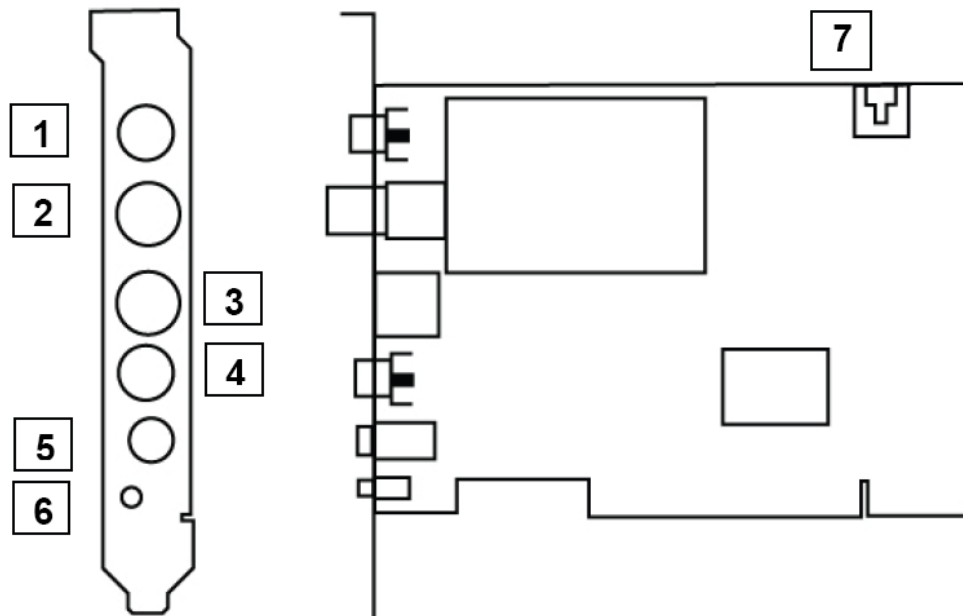


IR Receiver



Start Up Guide

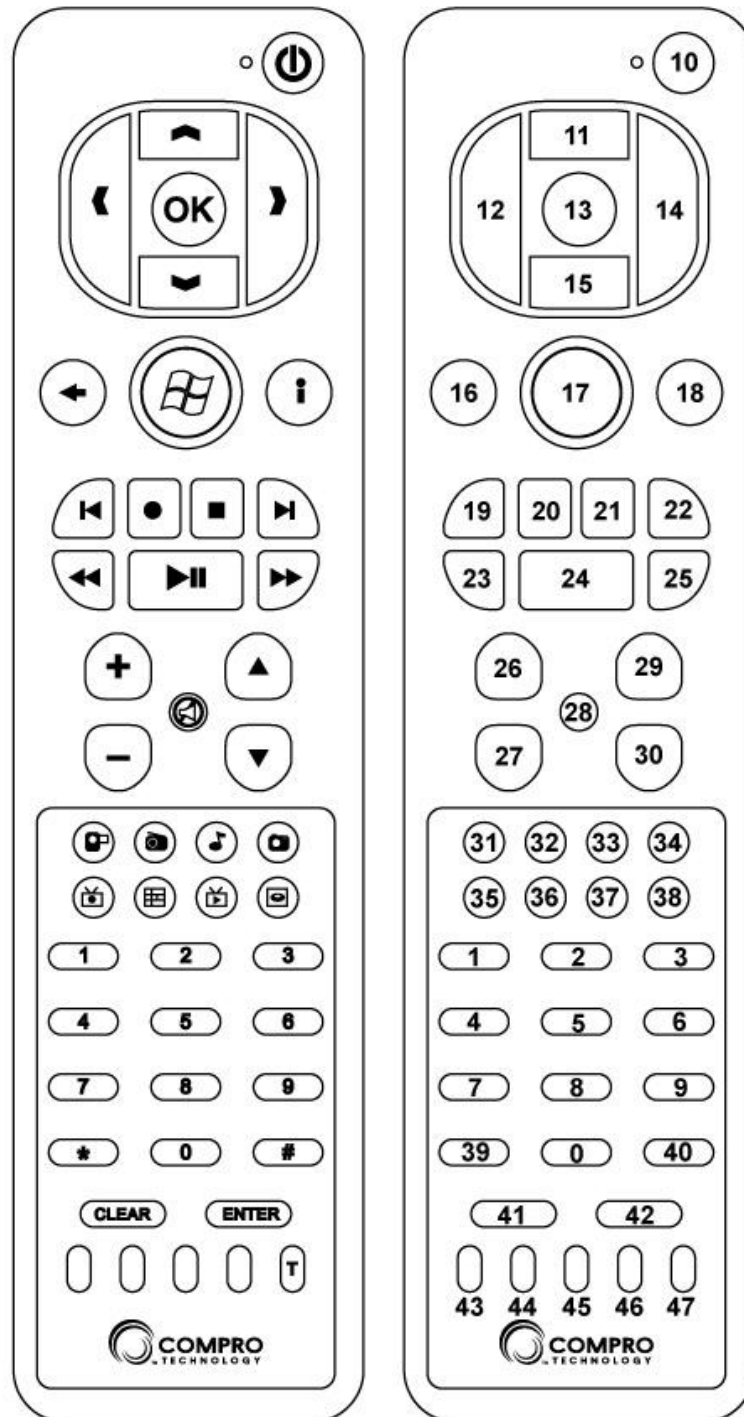
VideoMate M1F Connectors



| Item | Function | Description |
|------|----------------------|---|
| 1 | FM Tuner-In | Connect to an FM antenna feed. |
| 2 | TV Tuner-In | Analog TV cable |
| 3 | S-Video In | Use an S-Video patch cable to connect to a video source, such as a VCR, DVD or VCD. (Option for S-video patch cable, not included in the package) |
| 4 | Composite Video In | Use a Composite video patch cable to connect to a video source, such as a VCR, DVD or VCD. (Option for composite video patch cable, not included in the package) |
| 5 | Audio In | Use an audio patch cable to connect to an audio source, such as a VCR, DVD or VCD. (Option for audio patch cable, not included in the package) |
| 6 | IR | Connect the IR receiver here. |
| 7 | To Sound Card AUX-IN | Use an internal audio patch cable to connect to the AUX-IN port of your sound card. |

Windows Media Center Remote

Compro VideoMate M1F bundles the easy-to-use Microsoft certified remote control to controls the Windows Media Center and also ComproDTV, ComproFM software. Some keys are special designed for Windows 7/Vista, it may not be used in Windows XP system.



| No. | DTV 4 | FM 2 | WMC |
|-----|------------------------------------|--------------------|-------------------|
| 0-9 | Number Key | Preset Stations | Number Key |
| 10 | Into sleep mode | Into sleep mode | Into sleep mode |
| 11 | Up arrow or select Mono/Stereo/SAP | Up arrow | Up arrow |
| 12 | Replay or switch TV format | Scan channel(Down) | Left arrow |
| 13 | OK | Playlist | OK |
| 14 | Advance in Timeshifting | Scan channel(Up) | Right arrow |
| 15 | Down arrow or snapshot | Down arrow | Down arrow |
| 16 | EPG (US only) | Open on-line help | Back |
| 17 | WMC | WMC | WMC |
| 18 | Zoom In/Out | Max/Min | More |
| 19 | The last channel | The last channel | Skip rewind |
| 20 | Record | Record | Record |
| 21 | Stop/Live | Stop/Live | Stop/Live |
| 22 | Change scale of screen | ----- | Skip Forward |
| 23 | Replay/Rewind | Rewind | Rewind |
| 24 | Timeshift Play/Pause | Play/Pause | Play/Pause |
| 25 | Advance/Fast forward | Fast forward | Fast forward |
| 26 | Volume up | Volume up | Volume up |
| 27 | Volume down | Volume down | Volume down |
| 28 | Mute | Mute | Mute |
| 29 | Channel up | Channel up | Channel up |
| 30 | Channel down | Channel down | Channel down |
| 31 | Videos (WMC) | Videos (WMC) | Videos (WMC) |
| 32 | Radio (WMC) | Radio (WMC) | Radio (WMC) |
| 33 | Music (WMC) | Music (WMC) | Music (WMC) |
| 34 | Pictures (WMC) | Pictures (WMC) | Pictures (WMC) |
| 35 | Recorded TV (WMC) | Recorded TV (WMC) | Recorded TV (WMC) |
| 36 | WMC Guide | WMC Guide | WMC Guide |
| 37 | Live TV (WMC) | Live TV (WMC) | Live TV (WMC) |
| 38 | DVD Menu (WMC) | DVD Menu (WMC) | DVD Menu (WMC) |
| 39 | ----- | Enter frequency | ----- |
| 40 | Channel surf | ----- | ----- |
| 41 | Sleep function | Sleep function | Clear |
| 42 | Playlist | Playlist | Enter |
| 43 | C.C Language | ----- | Red |
| 44 | ----- | ----- | Green |
| 45 | ComproDTV | ComproDTV | Yellow |
| 46 | ComproFM | ComproFM | Blue |
| 47 | Setup | Setup | Teletext on/off |

Hardware Installation

Warning

Unplug your PC's main power cord before installing VideoMate M1F PCI card. Failure to do so may cause damage to your VideoMate M1F PCI card and void your warranty.

1. Shut down your computer and **unplug main power cord.**
2. Remove the computer case cover.
3. Plug one end of the internal audio patch cable to the green Audio-Out port on the VideoMate M1F PCI Tuner card.
4. Plug the other end of the internal audio patch cable to the **AUX-In** socket on your sound card or on the mainboard. The on-board sound usually has **AUX-In** and **CD-In** connector. Make sure you connect to the right one. Then you have to choose the audio source to be **AUX** or **CD-In** in the System Device in Settings of ComproDTV 4.5.
5. Insert VideoMate M1F PCI card in an open PCI slot.

This completes the hardware installation. Please proceed to install the software.

Software Installation

After installing the PCI card and cables in your computer, you should restart it and follow these steps to install the software.

- Step 1. After restarting, Windows will detect your VideoMate M1F PCI card and start the Add/Remove Hardware Wizard, prompting you to install the VideoMate M1F PCI card drivers. Please press **Cancel** and go to the next step.
- Step 2. Insert the installation CD into your CD drive. If you have Autorun enabled, the installer will start automatically. (If Autorun is disabled, double-click on "setup.exe" on the installation CD.) Compro recommends you choose **Complete** to install all necessary software (VideoMate M1F drivers, ComproDTV, and ComproFM 2) or choose **Custom** to install selected item by item. (We also provide the DiecrtX 9 and Acrobat Reader 6.0 software on the installation CD; you can browse the CD folder and install them by your need.
- Step 3. Press **Next** to install ComproDTV, Windows Media Format 9 Series Runtime
- Step 4. When installation completes, press **Finish** to restart computer.
- Step 5. When computer is restarted, please start up ComproDTV 4.5. The installation Wizard will guide you through the setup process.

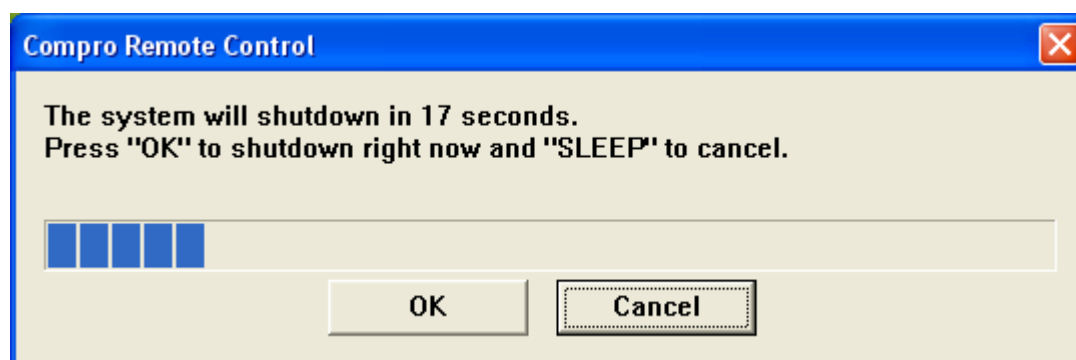
Remote Power Off

Remote Power Off

There are two situations for this operation.

When not watching TV, i.e. no ComproDTV 4.5 running:

Just press the “CLEAR” button on the lower-left corner on the remote keypad; you will see a dialog as shown below. Program will countdown 20 seconds to shutdown the computer. If you don't want to shut down the computer, please press the CLEAR button again, in other words, pressing the CLEAR key a second time is the same as pressing the “Cancel” button. You may also use your mouse to press the cancel button. Press OK to immediately shutdown the computer.



When watching TV, i.e. ComproDTV 4.5 is running:

Just press the CLEAR button on the lower-left corner on the remote keypad repeatedly, you will see the text on the screen turns to SLEEP OFF, SLEEP ON - 30 MINUTES, SLEEP ON - 1 HOUR, SLEEP ON - 2 HOURS, and SHUTDOWN. When the text shows SHUTDOWN, it will countdown 20 seconds to shutdown your computer. If you don't want to shutdown the computer, please press the SLEEP button again.

Note

Make sure you save all open files before using remote shutdown function.

ComproDTV Gadget Tool for Vista/Win 7

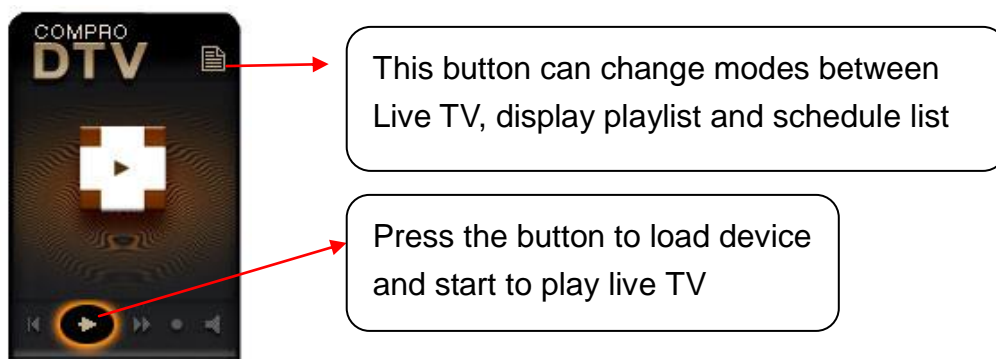
The Compro gadget tool is designed to provide the more convenient TV experience in Windows Vista/7. It will be installed from the Compro installation CD, and you can delete and add it from gadget setup.

Note

1. Gadget Tool is meant for Vista/Win 7 32 bit operation system only.
2. Vista Gadget Tool needs the channel table from ComproDTV 4.5. Please autoscan all the available channels in ComproDTV 4.5. Then you can use the Gadget Tool.
3. If there is no picture when you click the live TV button, please right-click the mouse button and select the video source you want.

UI Control

DTV Gadget has three modes including **Live TV mode**, **display playlist**, and **display scheduled list**.

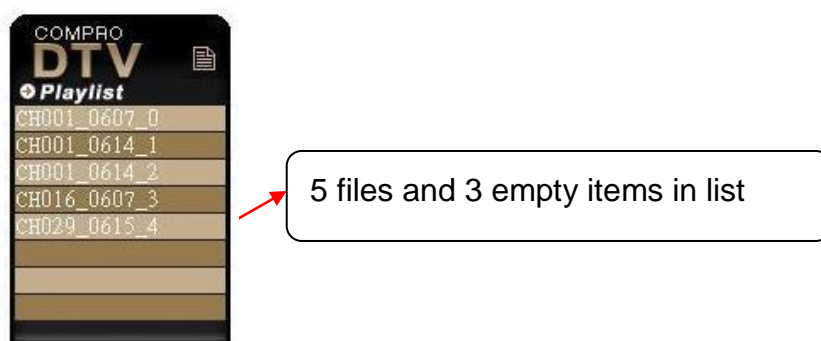


The buttons from left to right sides are:

| | |
|--|--|
| | Channel down in live TV mode |
| | Start/Stop Live TV, Play/pause from playlist |
| | Channel Up in live TV mode |
| | Start/stop record live TV |
| | Mute |

Playlist mode: It just displays first eight files in the list you recorded, if there are more than eight files in folder, the ninth file or rest of files will not be display.

The figure in below shows the playlist style:



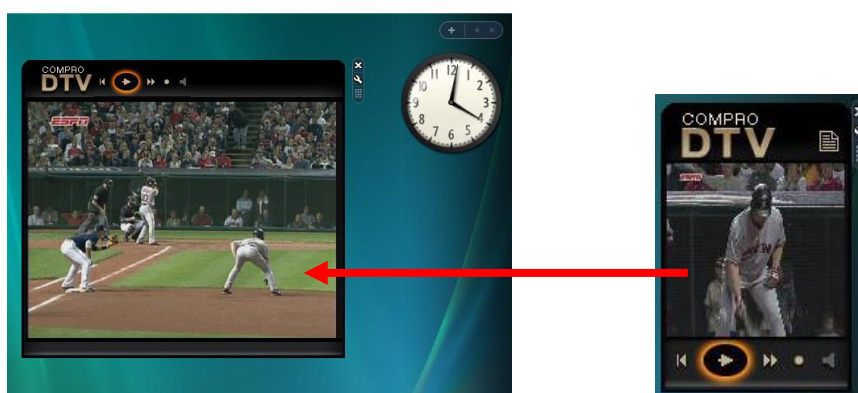
If clicking any files, the gadget will change to play mode from playlist mode, then playing the file you clicked.

Scheduler list mode: This mode will display the top 5 of your current scheduled list, you can click any of the scheduled item and check the detail information of it.

The last mode is schedule view which has two different parts. First, there is a table that has five rows; it means that schedule view will allow the first five schedules in the list. Second, if clicking the item, it will change to another part, which show in detail about the schedule you clicked. Clicking again will go back to first part. The process showed as below:

Dock and Undock Gadget Window:

Only docked gadget has three modes, the undocked gadget only support live TV/playback video mode, and its size is bigger than docked one. You can direct drag the gadget window to the other place out the sidebar and shows the bigger undock window to watch TV or playback recorded video files.

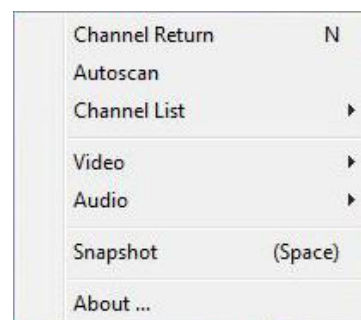


Directly drag gadget windows out the sidebar and shows the bigger window

Because undocked gadget lacks playlist, if you wants to play a file in undocked mode, you can drop a file into the window of gadget to play a file .(in docked mode, you can also play a file by dropping a file into gadget) The control of button in undocked mode is the same as docked mode.

Pop Menu

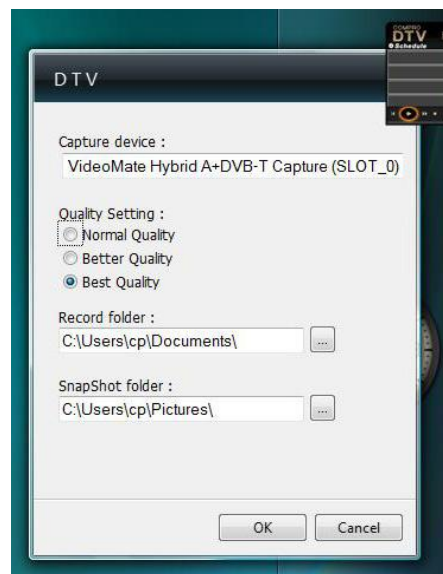
Click the right mouse button on the gadget window; it will open the pop menu for selection. You can return to last channel, autoscan available channels, select channel to watch from channel list, select video source, adjust audio volume, or snapshot TV screen.



Gadget Settings

Settings of gadget have four parts included:

- Capture device: to select capture devices.
(when running gadget first time or having more than one device, this item is needed)
- Quality setting : to select recording quality
Normal, Better, Best Quality
- Record folder: a directory to place recorded files.
- Snapshot folder: a directory to place picture.



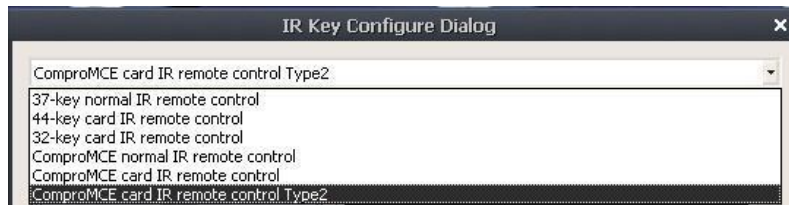
HID (Human Interface Device) for Remote

After you install the software, you can see the remote logo show in your system bar.

You can choose the “Option” to enter the setup window.

Setup:

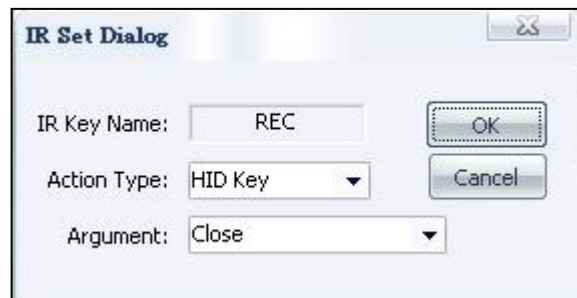
Step 1: Choose the type of your remote control. (There are many type of remote from Compro, please select the remote picture as you have).



Step 2: Choose one IR function you want to change.



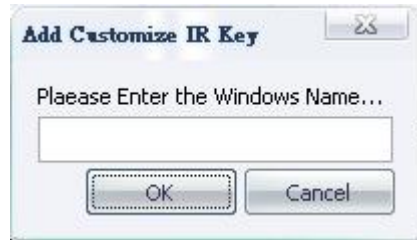
Step3: Set the IR dialog you want and press OK button.



Step4: Repeat setp1 to 3 to run all the changes.

You can also set a whole new program of your remote control in some particular software or window.

Press “Add” button and enter the name you want. Repeat the step 1 to 4.



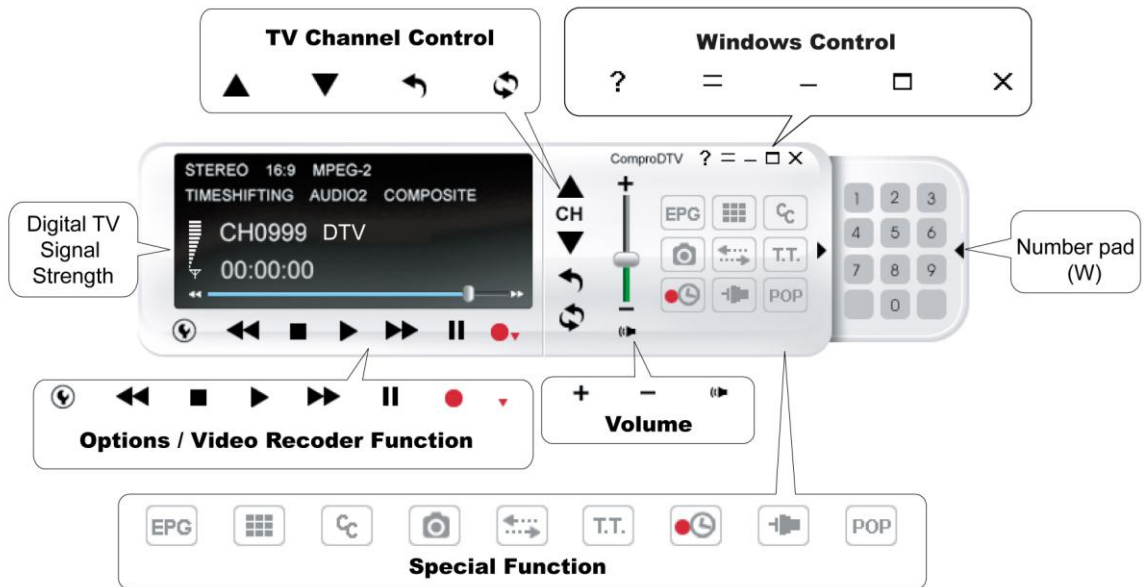
Note

If you have any Windows Media Center system in your PC, this function can replace the windows remote control. HID can also combine the Compro software control in the WMC interface to make you more convenient.

ComproDTV 4.5

















Control Panel

The DTV 4.5 control panel provides button controls for TV channel selection, video recording, image capture and more.



The table below describe the functions of the buttons of DTV4.5 control panel

| Windows Control | |
|---------------------------|----------------------------|
| ? Help (H) | = Docking (D) |
| — Minimize (G) | □ Maximize (Z) |
| ✕ Exit (CTRL+X) | |
| Volume | |
| + Increase Volume (+) | — Decrease Volume (-) |
| 🔊 Mute (M) | |
| TV Channel Control | |
| ▲ Channel Up (Page Up) | ▼ Channel Down (Page Down) |

| | |
|--|---|
|  Channel Return (N) |  Repeat Recorded Files (CTRL+P) |
| Options / Video Recoder Function | |
|  Options (O) |  Rewind (Left Arrow) |
|  Stop (S) |  Play (P) |
|  Fast Forward (Right Arrow) |  Pause (U) |
|  Record (R) |  Record Option (Ctrl+R) |
| Special Function | |
| EPG EPG (E) |  Channel Surfing (F) |
|  Closed Caption (C) |  Snapshot (Space) |
|  Timeshift (T) | T.T. Teletext (X) |
|  Schedule (B) |  Video Source (V) |
| POP Add Windows (F3) | |


Note

Please note that not all options are available at all times, and may be grayed out or inaccessible depending on your hardware setup and TV services available. The following figure gives you the function of the button with (Hot key)

Start ComproDTV 4.5 and watch TV

After installation, just press the remote or double click the ComproDTV 4.5 icon on the desktop, you will be able to watch TV. Same as operating a normal TV set. Watch TV programs on your PC, in full-screen mode or in a window. Channel up and down. Close ComproDTV 4.5 and even shutdown the computer with the full function remote control keypad.

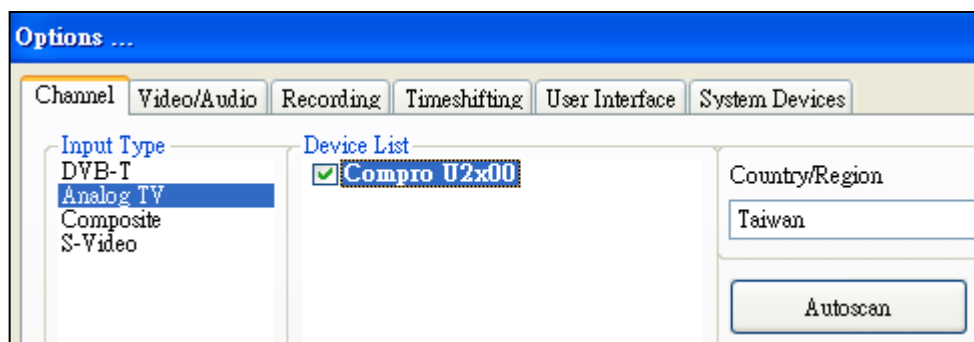
Options

Press the Options button  to open the Options dialog box. You can change detail settings of ComproDTV 4.5 here.

TV Settings


This option gives you the way to manually select TV system and set the method of scanning TV programs.

Choose "Input Type" → Check the "Device List" → Country /Region → Autoscan



Autoscan

The first time you start ComproDTV 4.5, Autoscan will automatically scan for available TV channels for TV signals. You can rescan the channels at any time by pressing the **Autoscan** button. Also, you can enable the advanced autoscan for more precision scan result.

When **Autoscan** is finished, detected channels are automatically enabled and marked with the green check mark . Channels, where a valid signal could not be detected, are disabled and marked with a blank. However, you can interrupt the scanning process by pressing the **Stop** button.

After you are finished scanning for available channels, you may select **OK** to return to the display window, or customize the channel orders according to your preferences.

Channel Naming

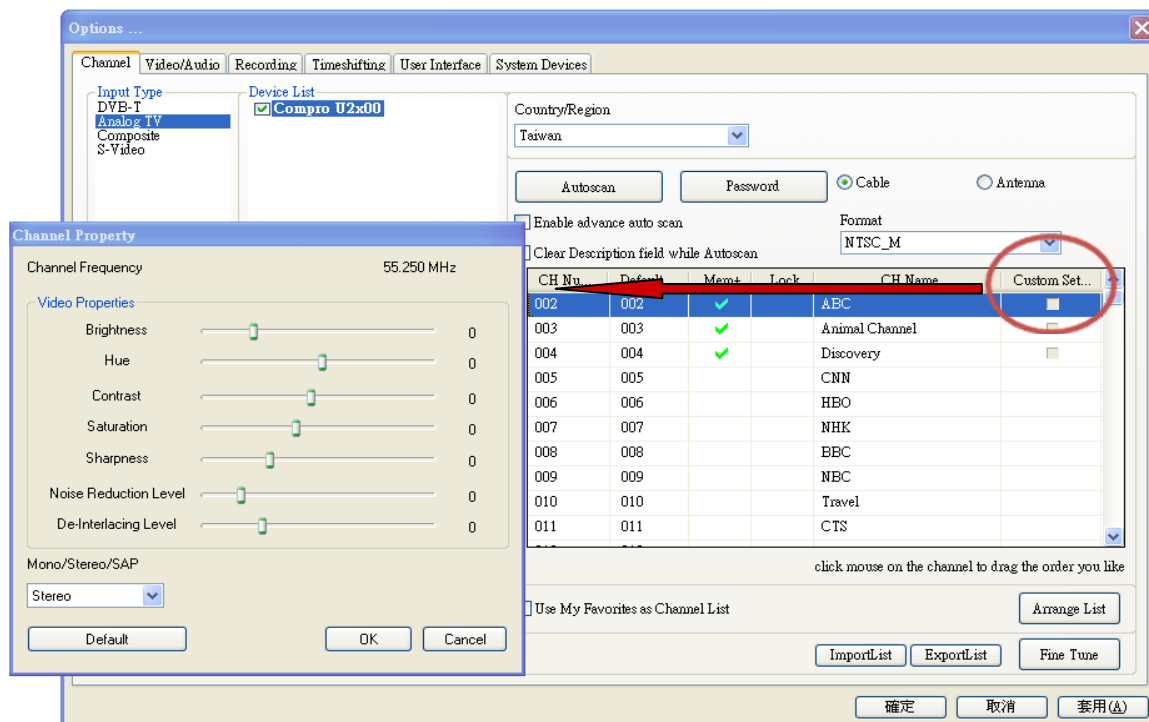
You can customize the channel names by double-click on the **CH Name** field of the channel you wish to rename.

| CH Nu... | Default ... | Mem+ | Lock | CH Name | Custom Set... |
|----------|-------------|------|------|----------------|---------------|
| 005 | 005 | ✓ | | | ■ |
| 006 | 006 | ✓ | | ABC | ■ |
| 007 | 007 | ✓ | | HBO | ■ |
| 008 | 008 | ✓ | | Travel Channel | ■ |
| 009 | 009 | ✓ | | Discovery | ■ |

If you have edited the channel name, fine tune channel, or customize channel settings. You can export the current channel list to text file and save it to other place. When you reinstall the ComproDTV 4.5 or your system, you can import the previous channel list and save your time for resetting it.

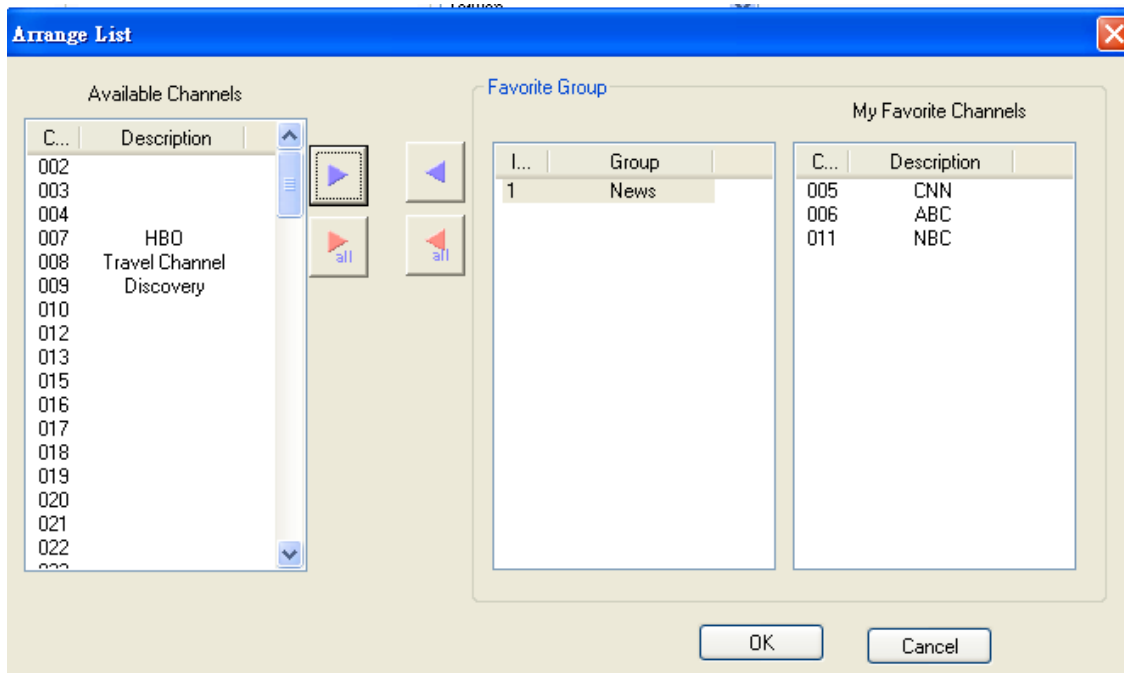
Custom Settings for each channel

You can customize each channel properties by click the icon in “**Custom Settings**” filed and edit it. In the channel property settings, you can setup video color and noise reduction level, de-interlacing level for each channel (noise reduction level, de-interlacing level, and sharpness setting are not suitable for digital TV).




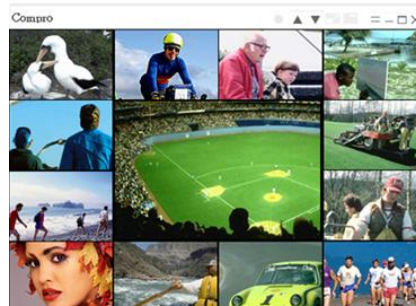
Using my favorite channel list

Options → Channel → Arrange List



Channel Surfing

While watching TV, the channel surfing  feature gives you an overview of available programs. Double click the channel screen can direct jump to the channel you want.




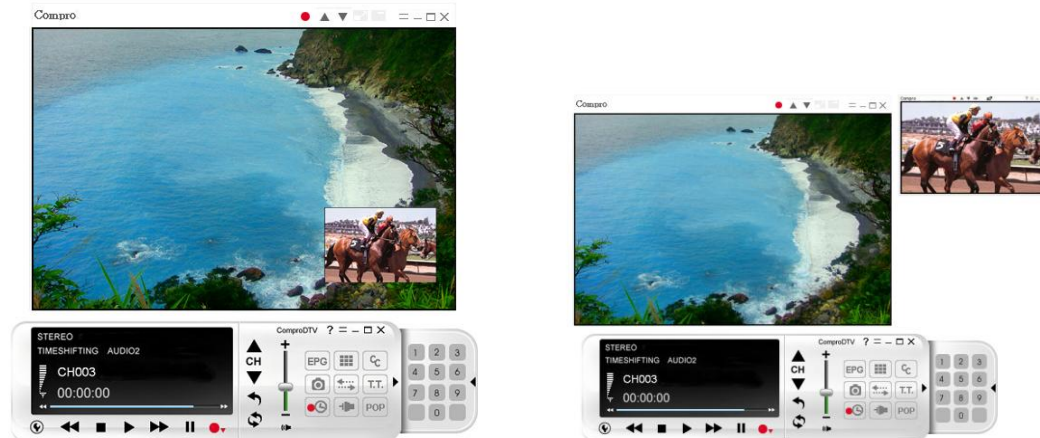
PIP/POP mode

You can watch 1 live analog TV show and playback recorded video file at once in analog TV.

You can press the video playback button to open a slave window for that. Main window has all features while slave window has limited functions only. Double-click on the slave window can switch the TV program to the main

window. **Alignment Window**   button will put slave window(s) into

main window which is convenient for you to watch TV/Video on full screen mode. The buttons on the upper-left corner slave window  are Channel Up, Channel Down, Mute, Windows Alignment, and Close respectively. Slave window can be resized by mouse dragging lower-left corner to any ratio.



Video Desktop

While watching TV, you may right-click on the TV screen and select video on desktop or press the hotkey (F7) to activate Video Desktop mode. This mode makes the video source as your desktop screen. It is similar with full screen but the desktop icons and taskbar will remain on top. The following picture shows the TV on the desktop.

For the Video Desktop feature, you need to enable the “Use Overlay Surface” feature. Options→Video/Audio→Select “Use Overlay Surface”




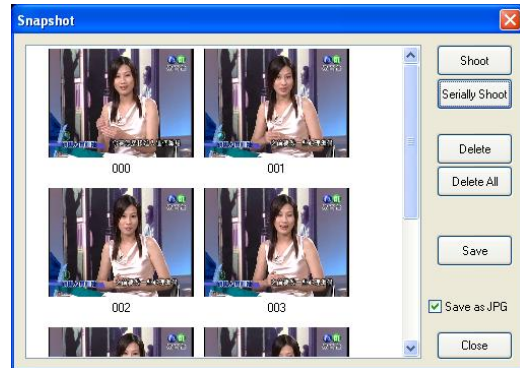
Right-Click Mouse Menu

If using mouse to right-click on the TV screen, you can see a menu pop up. There are many useful options for your convenience.

The right-click menu also provides SmartZoom feature to auto-fit or customize video screen for different type monitors, the Aspect Ratio setting provides 4:3, 16:9, 1.85:1, 2.35:1 and customize for different resolutions.

Still Image Capture


Click on the capture icon  on the control panel or hit the "Space Bar" of the keyboard shortcut to capture an image of the display window. You can see the screen capture dialog as below. You can setup to save it as jpg or bmp format.




Recording


ComproDTV 4.5 supports MPEG-1/2/4 formats recording in analog TV.

To instantly start recording:

Press the **Record** button . ComproDTV 4.5 starts recording the video source currently showing in the display window. It will save it to a file on your disk. **If you already start recording, you still can click the record button to setup 30, 60, 90, and 120 minutes recording immediately. Thus, you can go out without worry about the record still ongoing.**




Press the Stop button  to stop recording. ComproDTV 4.5 will save it automatically and show the file name on the screen.

You can also use the schedule recording by press **Schedule** button  on control panel of ComproDTV 4.5.

Timeshifting

Timeshifting temporarily saves the video to your hard disk for a specified period of time so that you can pause, replay, or skip commercials during live TV, without interrupting an ongoing recording session.

Press the **Timeshifting**  button and the Time Monitoring bar will appear.



You may also press the **Advance** (for commercial skip) and **Replay** (for instant replay) buttons on the control panel or remote control to navigate through the program. When you return to your seat, you can resume viewing the program from the point when you left.

ComproFM 2

Introduction

ComproFM lets you enjoy FM radio programs on your PC. Listen to music or other programs while you work or browse the Internet.

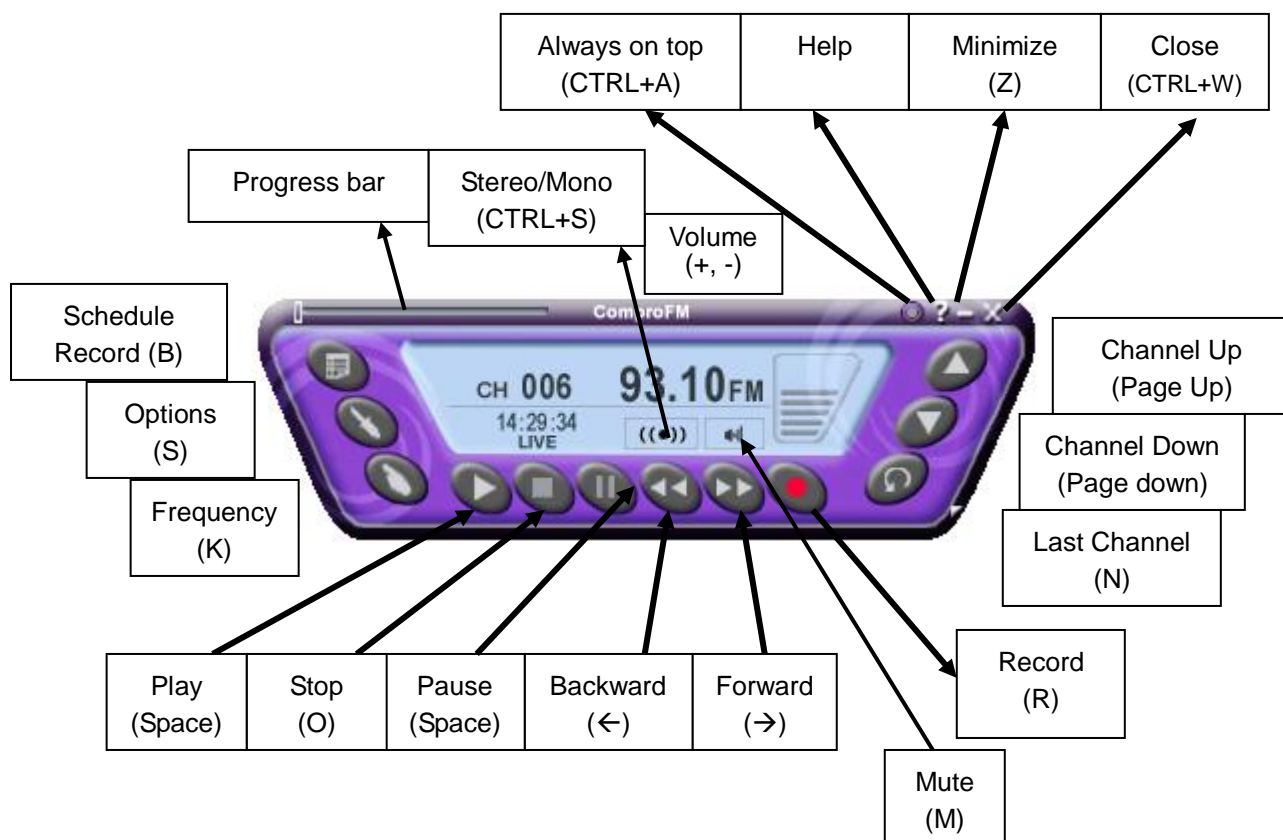
Note

The hardware needs to have FM tuner in order to use ComproFM.

This section provides basic information for ComproFM. For more details, please check the help file of ComproFM or the manual in the installation CD.

Control Panel

The following describe the ComproFM control panel functions, and tips for using ComproFM. The following figure gives you the function of the button with (Hot Key.)



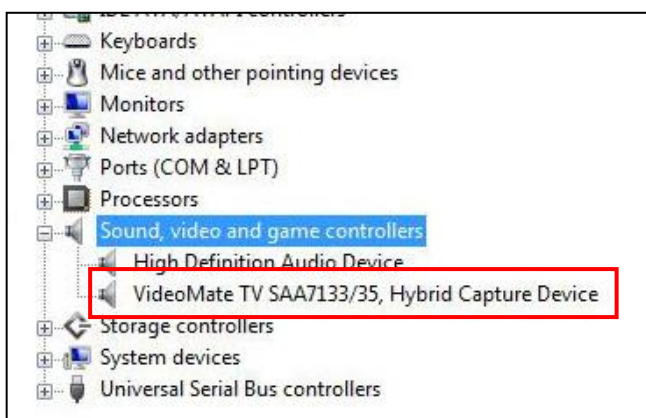
Troubleshooting

OS requirement

VideoMate M1F PCI card has to work on Windows XP SP3, Vista SP1 or Win 7. You are welcome to www.WindowsUpdate.com website for the Service Pack update of Microsoft.

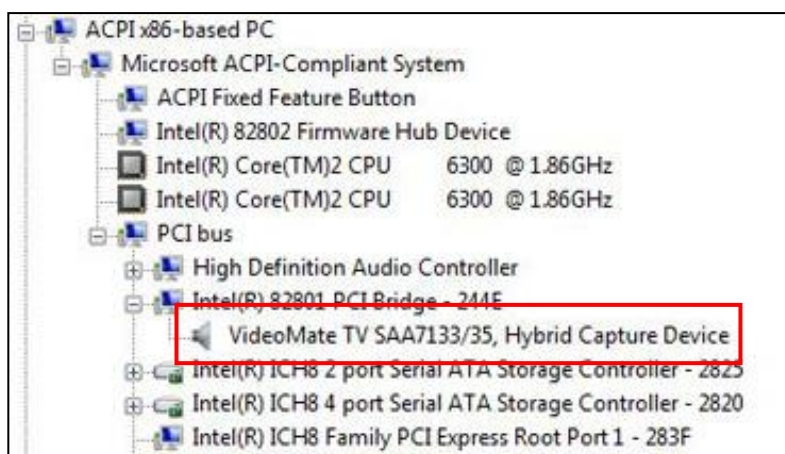
Driver Installation

The most common cause of problems with the TV Tuner Card is incorrect installation of the TV capture and TV tuner drivers. If you have problems watching, recording, or timeshifting live TV, please check the status of the drivers with Device Manager.



You should see "VideoMate TV SAA 7133/35 Hybrid Capture Device" devices, in the "Sound, video and game controllers" section of Windows Device Manager.

If these drivers are not there, uninstalling and reinstalling the VideoMate M1F PCI card drivers can help. Use the Add/Remove Programs Control Panel applet to uninstall the drivers. Reinstalling the drivers should fix this problem.



Video OK / No Audio

If you can view the TV picture but get no audio, you should check the following:

Please check that the WAVE sound is not muted or volume too low in the Windows Volume Control dialog. (Double-click on the speaker icon in the system tray.)

Also check the sound is not muted or volume too low in the Windows Volume Control dialog. (Double-click on the speaker icon in the system tray.)


Sometimes updating the sound card driver from vendor or TV card's driver and application may help as well.

Why can't I playback the recorded video?

The usual reason for this problem is conflict with some CODEC software, such as Nimo, K-Lite, and Stormcodec. This kind of software forces applications to use their CODEC for play back. Therefore, the recorded file cannot be played since an incompatible CODEC is being used for playback. Uninstalling the CODEC software will help. Also reinstalling DirectX usually solves the problem. (See our website for how to reinstall DirectX)

Why does the remote control fail?

The remote control sensor, which is plugged into the TV card, may be loose. Please unplug it and plug it in again. You should also check the batteries of the remote control. Do not use rechargeable batteries.

Verify that the  IR icon (ComproRemote) is in the system tray on the lower-right corner of the screen. If you don't have ComproRemote on the system tray, start the following program:

C:\Program Files\ Common Files\VideoMate\ComproRemoteDTV.exe

Then you should see the icon on the system tray. The IR icon should turn bright when you press buttons on the remote.

If you see no response, please move your mouse cursor on the IR icon. If you see it shows "No Device," your drivers may not be properly installed. Please remove ComproDTV 4.5 using "Add/Remove programs" in the Control Panel and reinstall it.

Some devices may emit the IR signals. Please check if there are any microwaves or lights that may be doing this. And make sure as few cables as possible are crossing the IR receiver.

Why are images scrambled ?

Please update the video and sound card drivers from vendors' web sites. Make sure the driver for motherboard chipset is also up to date. The default drivers supplied with the Windows operating system are usually too old to operate correctly. If you still have problems, please install the latest ComproDTV and driver from our website.

Contacting Compro Technical Support

Before you submit an email for support, please check support FAQs on our web site. <http://www.comprousa.com>.

When contacting Compro for technical support, please use the Compro Feedback (http://www.comprousa.com/feedback/index_en.php) or directly email to support@comprousa.com.

